

Bare Branches

FABRICS BY **LONNI ROSSI**



Moon Circles Designed by:
Lonni Rossi

Quilt Size: **24" x 80"**

andoverfabrics.com

Bare Branches

It all started with a branch! I spotted this very interesting branch laying on the ground and took it back to the studio. I scanned the branch into the computer and the magic started to happen — and the basic motifs for "Bare Branches" emerged.

I imagined warm colors of fall mingled with pristine icy stillness of early snowfall. "Bare Branches" has a range of values from very light to very dark, with many gradations in between. — *Lonni Rossi*



andover



makower uk
The Henley Studio

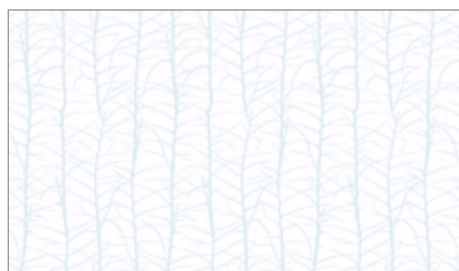
Free Pattern Download Available

1384 Broadway New York, NY 10018
Tel. (800) 223-5678 • andoverfabrics.com

2/5/03



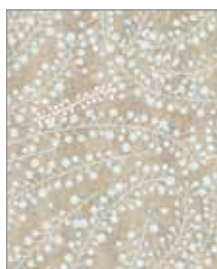
7530-MT 2½ yds



7531-MTL ½ yd



7532-MTN ½ yd



7533-MTN 1½ yds



7534-MT Fat ⅛ yd



7534-MTN Fat ⅛ yd



7535-MT Fat ⅛ yd



7530-MK



7531-MKR



7532-MK



7533-MKR



7534-MK



7534-MKR



7535-MKN

TEAL	BROWN	5 KITS	10 KITS	20 KITS
7530-MT	7530-MK	1	2	4
7531-MTL	7531-MKR	1	1	1
7532-MTN	7532-MK	1	1	1
7533-MTN	7533-MKR	1	1	2
7534-MT	7534-MKR	1	1	1
7534-MTN	7534-MK	1	1	1
7535-MT	7535-MKN	1	1	1
*5468-T	5468-DK	1	1	1

BACKING FABRIC

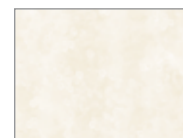
*5468-T	5468-DK	1	2	4
---------	---------	---	---	---

YARDAGE FOR BACKING: 2¾ YDS PER KIT

Fabrics shown are 20% of actual size.

Fabrics used in quilt pattern are shown in black.

Blend with
fabrics from
Raindrops
by Lonni Rossi



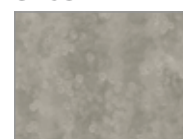
5468-L



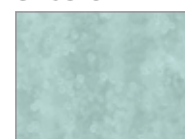
5468-C1



5468-N3



5468-C



5468-LT



5468-O



5468-N



*5468-T ¾ yd
(includes binding)
*(extra yds
needed for
backing)



5468-R

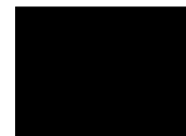


5468-DK

Blend with
Andover Solids



A-S-L



ANB-BLACK

Bare Branches

FABRICS LONNI ROSSI

andover : makower uk
The Henley Studio

2/5/14